

Product notes

Narrow 8° or medium 30° beam to skim over steps or as an uplight to columns, arches, fireplaces and window reveals.

Colour Temperature	2700K
Lumens	85Lm
Wattage	1W
Efficacy	85Lm/W
Lifetime (70% Light output ratio)	50,000Hrs
Source type	LED
Input	350mA
Forward Voltage	2.8v DC
Wiring	Series
IP rating	IP54
CRI	95

LED Technical information

2 Step MacAdam Ellipses

Using the latest state of the art LED's, the LED has excellent colour rendition with a colour temperature that replicates tungsten halogen. The LED is binned to 2 Step MacAdam Ellipses to ensure consistency when specified with multiple products. John Cullen continually research the latest available solution as technology develops.

Installation notes

- Connection** - Find a suitable accessible place for driver. Feed cable to required location.
- Installation** - Cut an accurate 44mm cutout. Connect supply from driver. Push fit into place using the products side clips and level. Connect 350mA supply onto the flying leads ensuring that the correct polarity has been observed (black cable - negative red cable + positive). Please note if wired incorrectly the LED will be damaged. Push fit into installation hole.
- Qualified electrician** - All electrical works to be carried out by a qualified electrician.
- Cable thickness** - Is the responsibility of the installer. Cable thickness must be calculated to avoid voltage drop. Calculations and cable tables can be found within the latest edition of the IEE wiring regulations.
- Positioning** - Positioning is subject to interior and installation requirements. Placement guides are available for a limited number of products. Guides can also be discussed with the design department.
- LED lamps in hot environments** - LED lamps should be positioned away from heat sources such as heaters, under floor heating, saunas etc. LED's will prematurely expire if in sustained contact to heat.
- Burial sleeve** - Burial sleeves are available for setting into concrete and for installation in loose surfaces. Burial sleeves are normally used to reinstate fixings made in unstable materials.
- 0-10v Dimming** - Products can be dimmed on a 0-10v dimming signal when connected to the appropriate control device. When wiring 0-10v cable back to switch control, observe exact polarity for correct installation.
- Drivers** - Driver to be specified subject to installation requirements. Electrician to find discreet, accessible location for remote drivers. Calculating cable lengths and diameter to avoid voltage drop is the responsibility of the installer. For maximum distances please refer to specific driver specification sheet.
- Polarity** - The product must be connected with the correct polarity (black cable - negative, red cable + positive). Incorrect wiring will damage the product, JC will not take responsibility. Please see wiring schematics for further information.
- LED colour shift** - Please be aware that all LED's will appear to have a slight colour shift when located in close proximity to each other and when placed in stark white installations.

PLEASE NOTE:- These notes are for guidance only. John Cullen accepts no responsibility for any installation using the above notes and the final decision on installation remains with the installer.

Product codes

E807506	Bronze 8°
E807509	Bright nickel 8°
E807517	Stainless steel (marine grade) 8°
E807528	Primed (for painting) 8°

Drivers

DR45300	45vDC 300mA 0-10v dimmable
DRMV48350	48vDC 350mA Mains dimmable

Accessories

Y100710	Burial sleeve
Y101310	Concrete burial sleeve

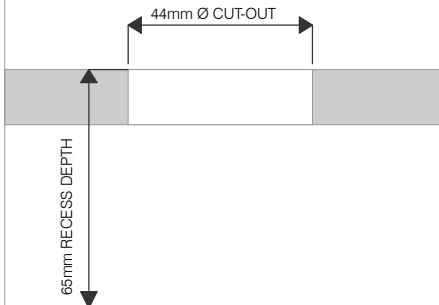
Holesaws

Y890200	Bi-Metal constant pitch 44mm holesaw
Y891200	Diamond ceramic core 44mm holesaw



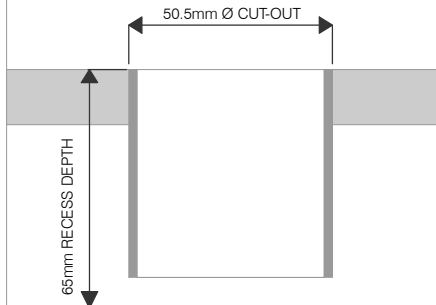
Designed in-house and manufactured in the UK. Exclusive to John Cullen.

USING A CLEAN SHARP HOLE SAW CUT THE REQUIRED HOLESIZE
USE DIAMOND HOLESAW FOR HARD SURFACES



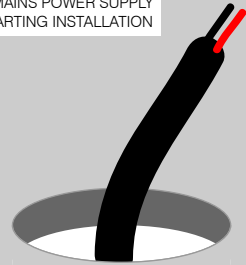
Cut-out - Standard

USING A CLEAN SHARP HOLE SAW CUT THE REQUIRED HOLESIZE
WHEN USING A BURIAL SLEEVE REFER TO JOHN CULLEN 'BURIAL SLEEVE INSTALLATION GUIDES'



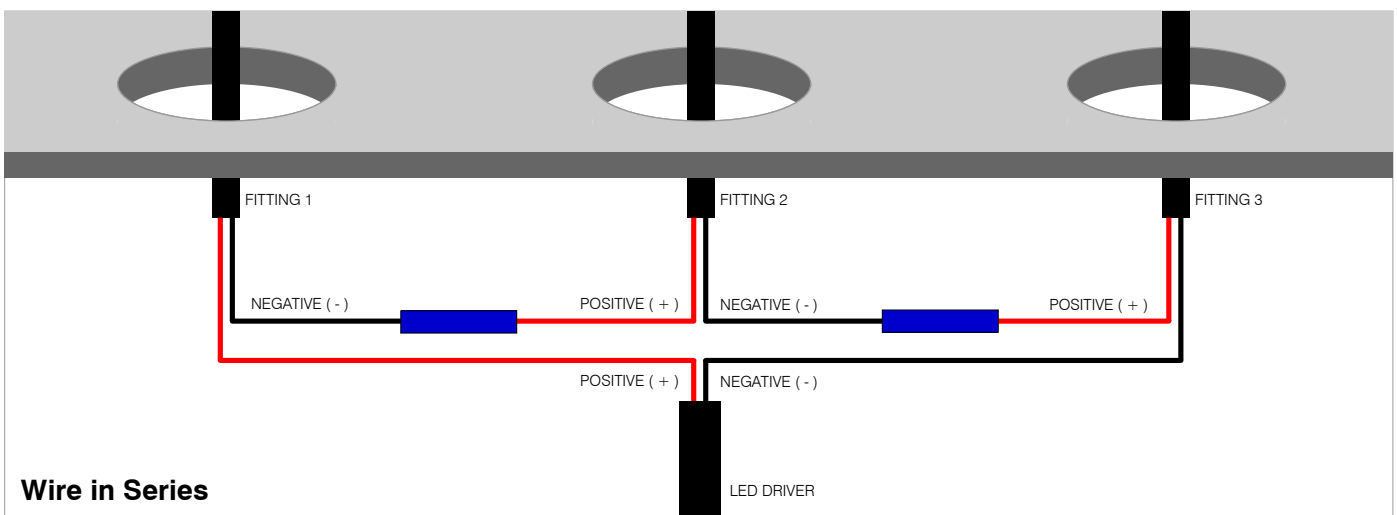
Cut-out - Burial Sleeve

TURN OFF MAINS POWER SUPPLY BEFORE STARTING INSTALLATION



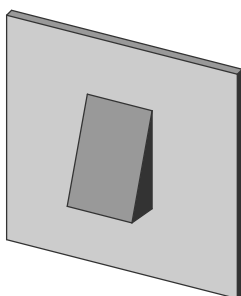
FIND A SUITABLE PLACE TO HIDE THE DRIVER (WHICH CAN BE ACCESSED FOR MAINTENANCE) FEED CABLE TO FITTING LOCATIONS

Feed cable

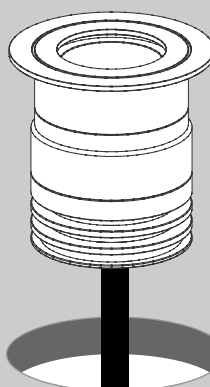


Wire in Series

TURN BACK ON MAINS SUPPLY
POWER FITTINGS ON AND TEST TO SEE IF
LIGHT FITTING WORKS CORRECTLY



Test



LOWER FITTING INTO INSTALLATION

Complete

WARNING

TURN OFF MAINS SUPPLY BEFORE
STARTING INSTALLATION

DO NOT CONNECT DIRECTLY TO MAINS SUPPLY

DO NOT WIRE WHEN DRIVER IS ENERGISED AS
LED HOT CONNECTION WILL DESTROY LED

USE ONLY JOHN CULLEN APPROVED DRIVER

WIRE IN SERIES: CORRECT POLARITY
MUST BE OBSERVED

LED MUST NOT BE INSTALLED IN A LOCATION
WHERE AMBIENT TEMPERATURE EXCEEDS 40°C

WWW.JOHNCCULLENLIGHTING.CO.UK